

Muttern für T-Nuten DIN 508

T-slot nuts DIN 508



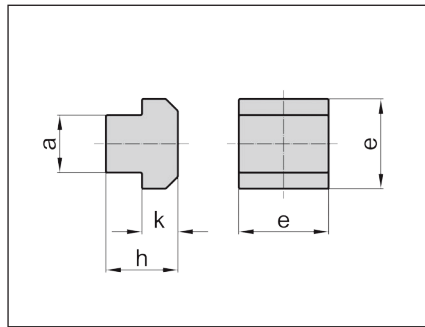
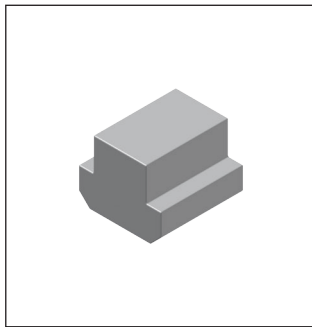
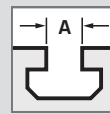
- Rohling Stahl (Güteklasse 8, blank)
- Rohling Edelstahl (1.4571)
- blanks, steel (grade 8, blank)
- blanks, stainless steel (1.4571)

Standardausführungen

- **Material:** Güteklasse 8 (blank), C45+C oder gleichwertig, galvanisch verzinkt; Norm: EN 10277-2, EN 10083-2;
- **Material:** nichtrostend, 1.4571-2H; Festigkeit: $R_m \geq 700 \text{ N/mm}^2$, $R_{p0.2} \geq 450 \text{ N/mm}^2$; Norm: EN 10088-3;

Standard Configuration

- **Material:** grade 8 (blank), C45+C or equivalent. zinc-plated; Standard: EN 10277-2, EN 10083-2;
- **Material:** stainless steel, 1.4571-2H; Strength: $R_m \geq 700 \text{ N/mm}^2$, $R_{p0.2} \geq 450 \text{ N/mm}^2$; Norm: EN 10088-3;



ARTIKEL-NR. PART NO.

TECHNISCHE DATEN TECHNICAL DATA

| Güteklasse 8 (blank) grade 8 (blank) | Edelstahl (1.4571-2H) stainless steel (1.4571-2H) | A* | a | e | h | k | Gewicht ≈ g/Stk weight ≈ g/item | Stück/Packung parts/package | |
|---|--|----|------|----|------|----|------------------------------------|--------------------------------|---------------|
| | | | | | | | | klein small | groß large |
| 08 OR 05 | - | 5 | 4,6 | 9 | 6,5 | 3 | 4 | 100 | - |
| 08 OR 06 | 08 06 | 6 | 5,6 | 10 | 8,0 | 4 | 5 | 100 | - |
| 08 OR 08 | 08 XR 08 | 8 | 7,6 | 13 | 10,0 | 6 | 11 | 100 | - |
| 08 OR 10 | 08 XR 10 | 10 | 9,6 | 15 | 12,0 | 6 | 18 | 100 | - |
| 08 OR 12 | 08 XR 12 | 12 | 11,6 | 18 | 14,0 | 7 | 26 | 100 | - |
| 08 OR 14 | 08 XR 14 | 14 | 13,6 | 22 | 16,0 | 8 | 48 | 100 | - |
| 08 OR 16 | - | 16 | 15,6 | 25 | 18,0 | 9 | 72 | 50 | - |
| 08 OR 18 | 08 XR 18 | 18 | 17,6 | 28 | 20,0 | 10 | 100 | 50 | - |
| 08 OR 20 | - | 20 | 19,6 | 32 | 24,0 | 12 | 156 | 50 | - |
| 08 OR 22 | - | 22 | 21,6 | 35 | 28,0 | 14 | 223 | 25 | - |
| 08 OR 24 | - | 24 | 23,6 | 40 | 32,0 | 16 | 316 | 25 | - |
| 08 OR 28 | - | 28 | 27,6 | 44 | 36,0 | 18 | 442 | 10 | - |
| 08 OR 36 | - | 36 | 35,5 | 54 | 44,0 | 22 | 824 | 10 | - |

connect
maschinenbau
mechanical engineering

muttern für t-nuten DIN 508
t-slot nuts DIN 508

BESTELLBEISPIEL
100 Stück, Mutter Rohteil DIN 508, 10 blank,
Artikel-Nr. 08 OR 10

ORDER SAMPLE
100 each, nut self finish DIN 508, 10 blank,
Part No. 08 OR 10

Andere Längen auf Anfrage. Rohteile ermöglichen es, Sonderausführungen der Muttern für T-Nuten selbst anzufertigen.

Other length on request. Blanks allow to create your own special configurations of T-slot nuts.

* Maß A für T-Nuten nach DIN 650.

* Dimension A for T-slots per DIN 650.